

Diagram illustrating the components of a system:

- Top component: A circle containing a triangle pointing right, with a dashed line extending to the left.
- Second component: A circle containing a square, with a dashed line extending to the left.
- Third component: A circle containing a circle, with a dashed line extending to the left.
- Fourth component: A circle containing a circle, with a dashed line extending to the left.
- Bottom component: A circle containing a circle, with a dashed line extending to the left.

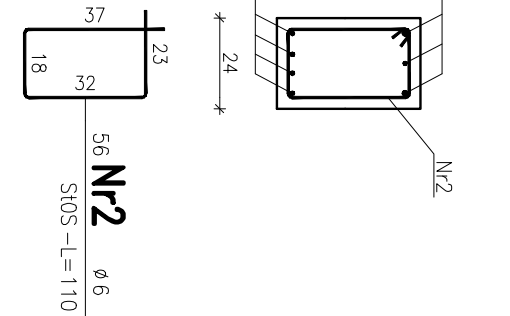


Beton: C20/25(B25)
Stal zbrojeniowa: AIIIIN-BST500S; A0-S10S
Otulina: słupy, podciąg i wieńce 3,0 cm

Technical drawing of a mechanical part, likely a flange or base plate. The drawing shows a square base with a central circular hole. Dimensions include a total width of 24, a central hole diameter of 12, and a distance from the center to the edge of 14.010. A label "Nr2" is present, and a dimension of 26 is shown at the bottom.

ZESTAWIENIE NADPROZYT TPPU 119		
DLUGOSC	ILOSC	
(m)	(szt)	
1,20	12	
1,50	20	
1,80	10	
2,10	6	

—

[illegible]